

# Truflo #TF200

Specify Kupferle's Truflo #TF200 Blow-Off for Above Grade or Truflo #TF250 for Below Grade



Truflo #TF200

- Unique Valve Delivers Full-Flow (400 gpm)
- Heavy Wall Cast-Iron Construction
- Easy to Maintain Without Digging
- 9/16" Operating Nut and Nozzle Cap
- 2½" NST Outlet (other sizes available)
- 2" FIP Vertical (Straight) Inlet
- Optional 2" Horizontal (Side) Inlet
- Optional Handle & Pent Cap (as pictured)
- Optional Hand Wheel Available

TRUFLO™



Truflo #TF250



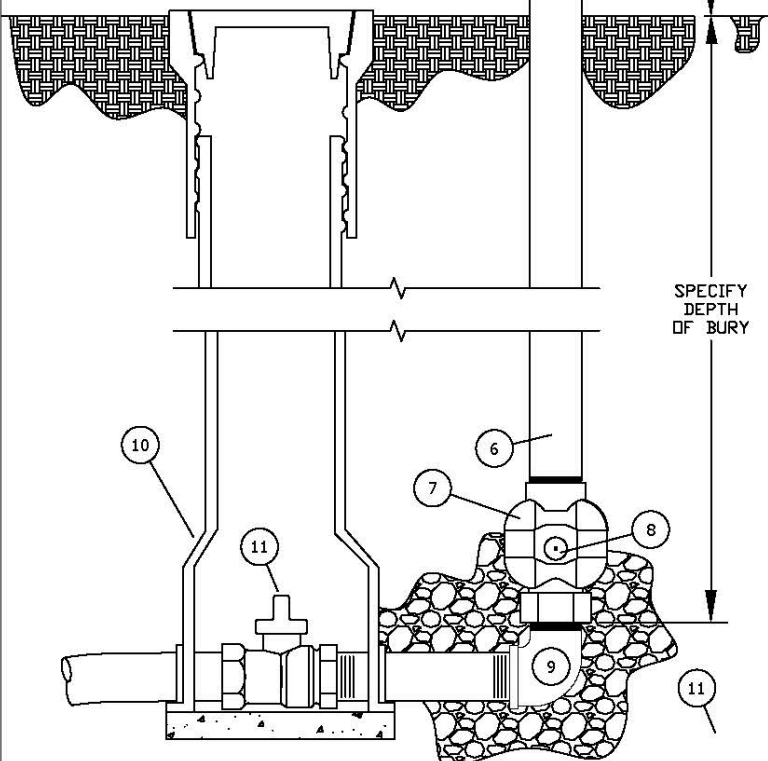
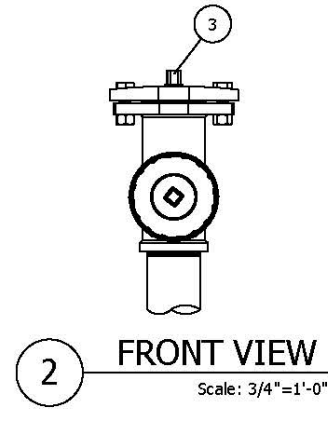
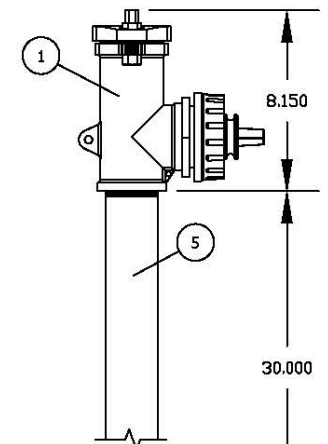
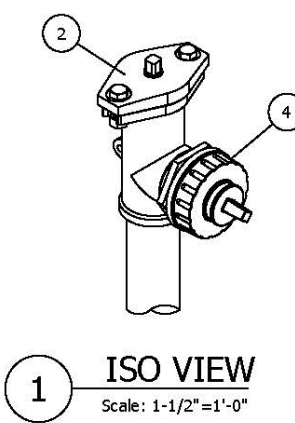
Truflo #TF200



Kupferle  
2511 North 9<sup>th</sup> Street  
St. Louis, MO 63102  
800-231-3990 / [www.hydrants.com](http://www.hydrants.com)  
Contact us at [info@hydrants.com](mailto:info@hydrants.com)



# TF-200 TRUFLO POST HYDRANT SPEC SHEET



HYDRANT SHALL BE \_\_\_\_\_' BURY, WITH (2" MJ SIDE, 2" FIP SIDE, OR 2" FIP VERTICAL) INLET AND (ANY SIZE UP TO 2-1/2" NST) NOZZLE OUTLET. HYDRANT SHALL BE NON-FREEZING AND SELF DRAINING. HYDRANT SHALL BE OPERATED BY TURNING A TOP-MOUNTED  $\frac{9}{16}$ " SQUARE OPERATING NUT COUNTERCLOCKWISE TO OPEN AND CLOCKWISE TO CLOSE. HYDRANT MUST SEAL THE DRAIN OUTLET IN ALL POSITIONS FROM 1/4-OPEN TO FULLY OPEN. ALL INTERNAL WORKING PARTS, THE INLET, AND THE OUTLET SHALL BE BRASS WITH THE VALVE BEING PVC. ALL WORKING PARTS SHALL BE SERVICEABLE FROM ABOVE GROUND WITH NO DIGGING REQUIRED. ALL WEAR PARTS (O-RINGS AND VALVE SEAT) SHALL BE OF COMMONLY AVAILABLE DIMENSIONS AND MATERIALS, NONE MAY BE VENDOR UNIQUE DESIGN.

*(ANTI-VANDAL CAP OPTION: AN ANTI-VANDAL LOCKING MECHANISM SHALL BE PROVIDED, WHICH SHALL ALSO SERVE AS AN OPERATING WRENCH.)*

*("TRAFFIC" OPTION: HYDRANT SHALL BE DESIGNED TO BREAK AWAY AT GRADE LEVEL IN EVENT OF A SIGNIFICANT IMPACT. OUTLET NOZZLE SHALL BE ABLE TO POINT IN ANY OF 8 RADIAL DIRECTIONS. HYDRANT SHALL BE DESIGNED TO ACCEPT FIELD-INSTALLED GRADE-CHANGE MODIFICATIONS.)*

HYDRANT SHALL BE MODEL TF-200 AS MANUFACTURED BY THE KUPFERLE FOUNDRY, ST. LOUIS MO. 63102 OR APPROVED EQUAL.

ITEM	ITEM / DESCRIPTION	NOTES
1	HEADSTOCK	
2	TOP CAP	
3	9/16" OPERATING NUT	
4	OUTLET	2-1/2" NST w/ SIDE CAP SHOWN
5	2" BARREL PIPE	STEEL, OTHER OPTIONS AVAILABLE
6	1/2" STEEL OPERATING ROD	NOT SHOWN, OTHER OPTIONS AVAILABLE
7	INLET VALVE BODY	2" FIP VERTICAL INLET SHOWN
8	DRAIN HOLE	
9	STREET ELBOW	BY OTHERS
10	VALVE BOX	BY OTHERS
11	HYDRANT SHUT-OFF VALVE	BY OTHERS
11	CRUSHED ROCK	BY OTHERS

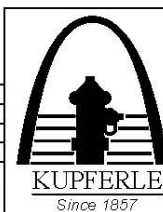
TF-200 HYDRANT TO BE INSTALLED AT THE FOLLOWING LOCATIONS:

---

DD/MM/YY	ISSUED FOR REFERENCE	TF-200 TRUFLO POST HYDRANT
DATE	STATUS / REVISION	

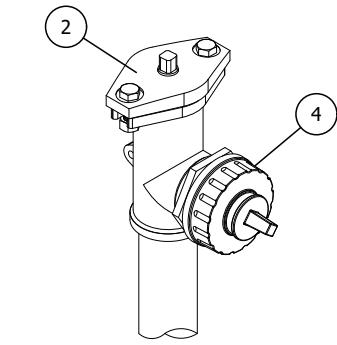
	INITIALS	DATE
DRAWN	DCL	2/12/18
APPROVED	DCL	2/12/18
MODIFIED		

SCALE  
1-1/2"=1'

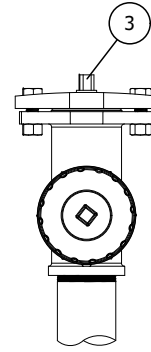
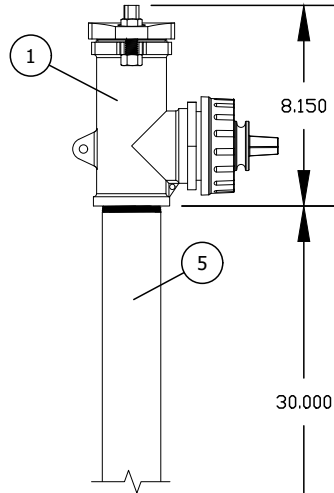


2511 NORTH 9TH STREET  
ST. LOUIS, MO 63102  
1-800-231-3990  
FAX 314-231-2820  
www.hydrants.com

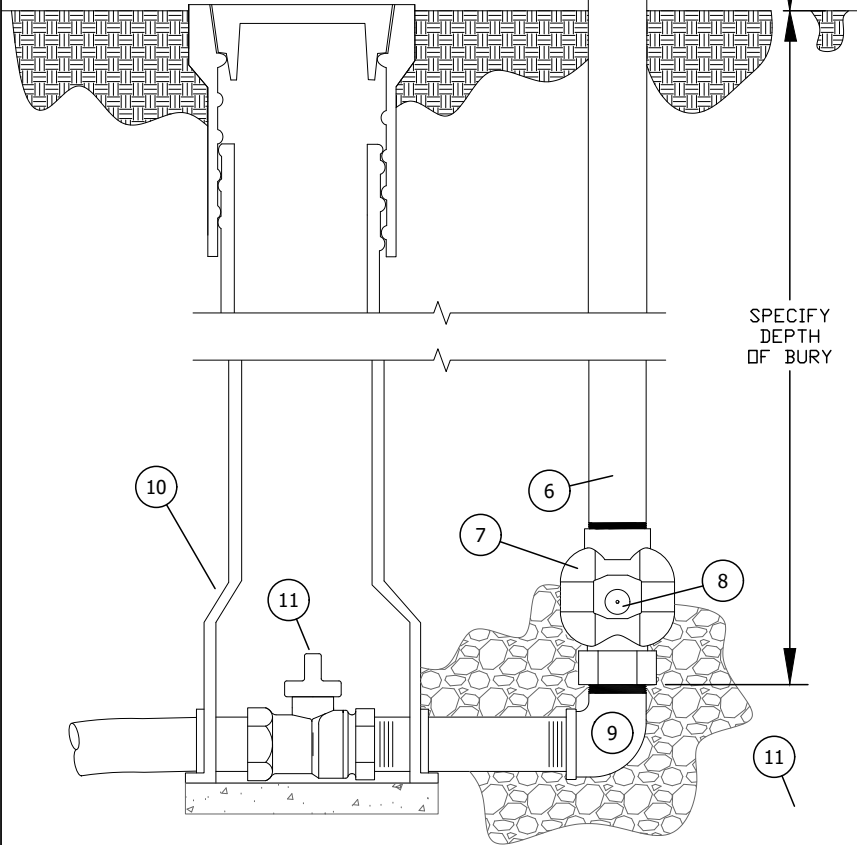
# TF-200 TRUFLO POST HYDRANT SPEC SHEET



**1** ISO VIEW  
Scale: 1-1/2"=1'-0"



**2** FRONT VIEW  
Scale: 3/4"=1'-0"



HYDRANT SHALL BE \_\_\_\_\_' BURY, WITH (2" MJ SIDE, 2" FIP SIDE, OR 2" FIP VERTICAL) INLET AND (ANY SIZE UP TO 2-1/2" NST) NOZZLE OUTLET.

HYDRANT SHALL BE NON-FREEZING AND SELF DRAINING. HYDRANT SHALL BE OPERATED BY TURNING A TOP-MOUNTED  $\frac{9}{16}$ " SQUARE OPERATING NUT COUNTERCLOCKWISE TO OPEN AND CLOCKWISE TO CLOSE. HYDRANT MUST SEAL THE DRAIN OUTLET IN ALL POSITIONS FROM 1/4-OPEN TO FULLY OPEN. ALL INTERNAL WORKING PARTS, THE INLET, AND THE OUTLET SHALL BE BRASS WITH THE PLUNGER BEING PVC. ALL WORKING PARTS SHALL BE SERVICEABLE FROM ABOVE GROUND WITH NO DIGGING REQUIRED. ALL WEAR PARTS (O-RINGS AND VALVE SEAT) SHALL BE OF COMMONLY AVAILABLE DIMENSIONS AND MATERIALS, NONE MAY BE VENDOR UNIQUE DESIGN.

**(ANTI-VANDAL CAP OPTION:** AN ANTI-VANDAL LOCKING MECHANISM SHALL BE PROVIDED, WHICH SHALL ALSO SERVE AS AN OPERATING WRENCH.)

**("TRAFFIC" OPTION:** HYDRANT SHALL BE DESIGNED TO BREAK AWAY AT GRADE LEVEL IN EVENT OF A SIGNIFICANT IMPACT. OUTLET NOZZLE SHALL BE ABLE TO POINT IN ANY OF 8 RADIAL DIRECTIONS. HYDRANT SHALL BE DESIGNED TO ACCEPT FIELD-INSTALLED GRADE-CHANGE MODIFICATIONS.)

HYDRANT SHALL BE MODEL TF-200 AS MANUFACTURED BY THE KUPFERLE FOUNDRY, ST. LOUIS MO. 63102 OR APPROVED EQUAL.

TF-200 HYDRANT TO BE INSTALLED AT THE FOLLOWING LOCATIONS:

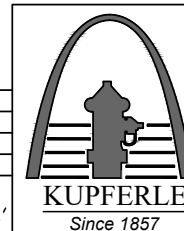
ITEM	ITEM / DESCRIPTION	NOTES
1	HEADSTOCK	
2	TDP CAP	
3	9/16" OPERATING NUT	
4	OUTLET	2-1/2" NST w/ SIDE CAP SHOWN
5	2" BARREL PIPE	STEEL, OTHER OPTIONS AVAILABLE
6	1/2" STEEL OPERATING ROD	NOT SHOWN, OTHER OPTIONS AVAILABLE
7	INLET VALVE BODY	2" FIP VERTICAL INLET SHOWN
8	DRAIN HOLE	
9	STREET ELBOW	BY OTHERS
10	VALVE BOX	BY OTHERS
11	HYDRANT SHUT-OFF VALVE	BY OTHERS
11	CRUSHED ROCK	BY OTHERS

DD/MM/YY	ISSUED FOR REFERENCE
DATE	STATUS / REVISION

TF-200 TRUFLO POST HYDRANT

	INITIALS	DATE
DRAWN	DCL	2/12/18
APPROVED	DCL	2/12/18
MODIFIED		

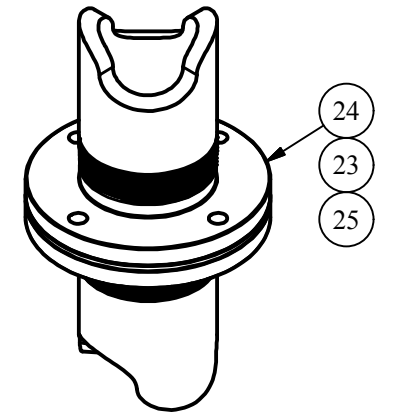
SCALE  
1-1/2"=1'



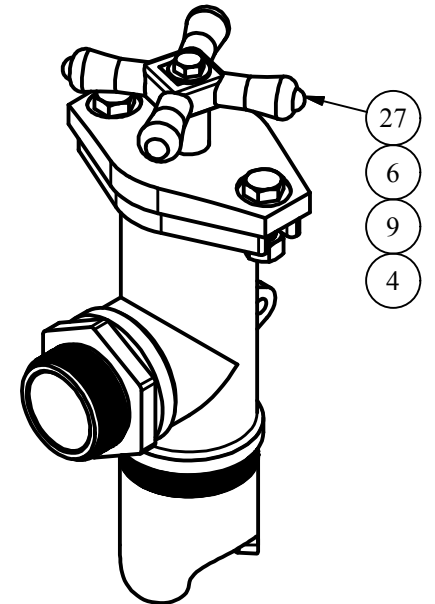
2511 NORTH 9TH STREET  
ST. LOUIS, MO 63102  
1-800-231-3990  
FAX 314-231-2820  
www.hydrants.com

# #TF-200 CUT SHEET

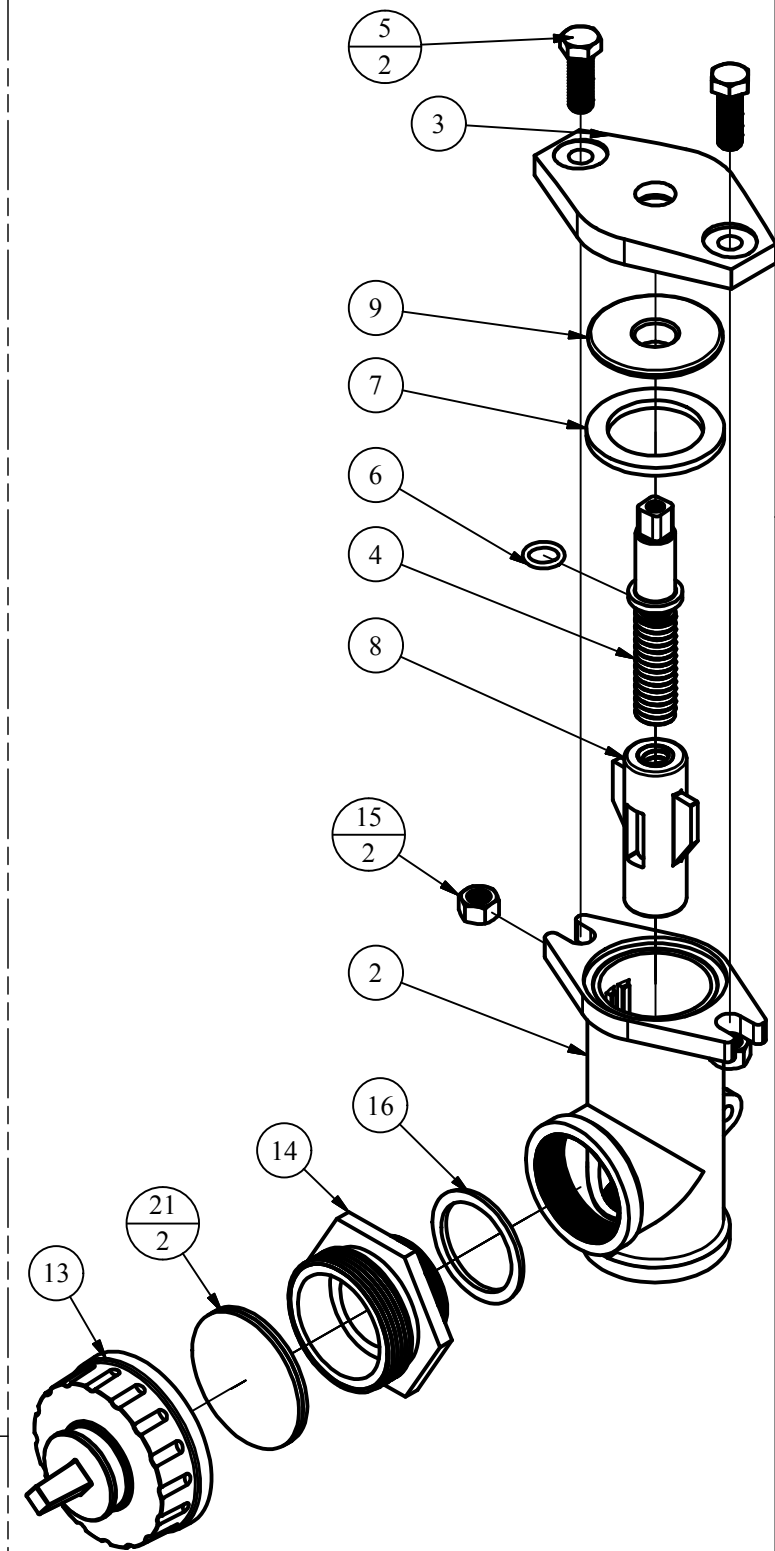
## #TF-200-TB OPTION



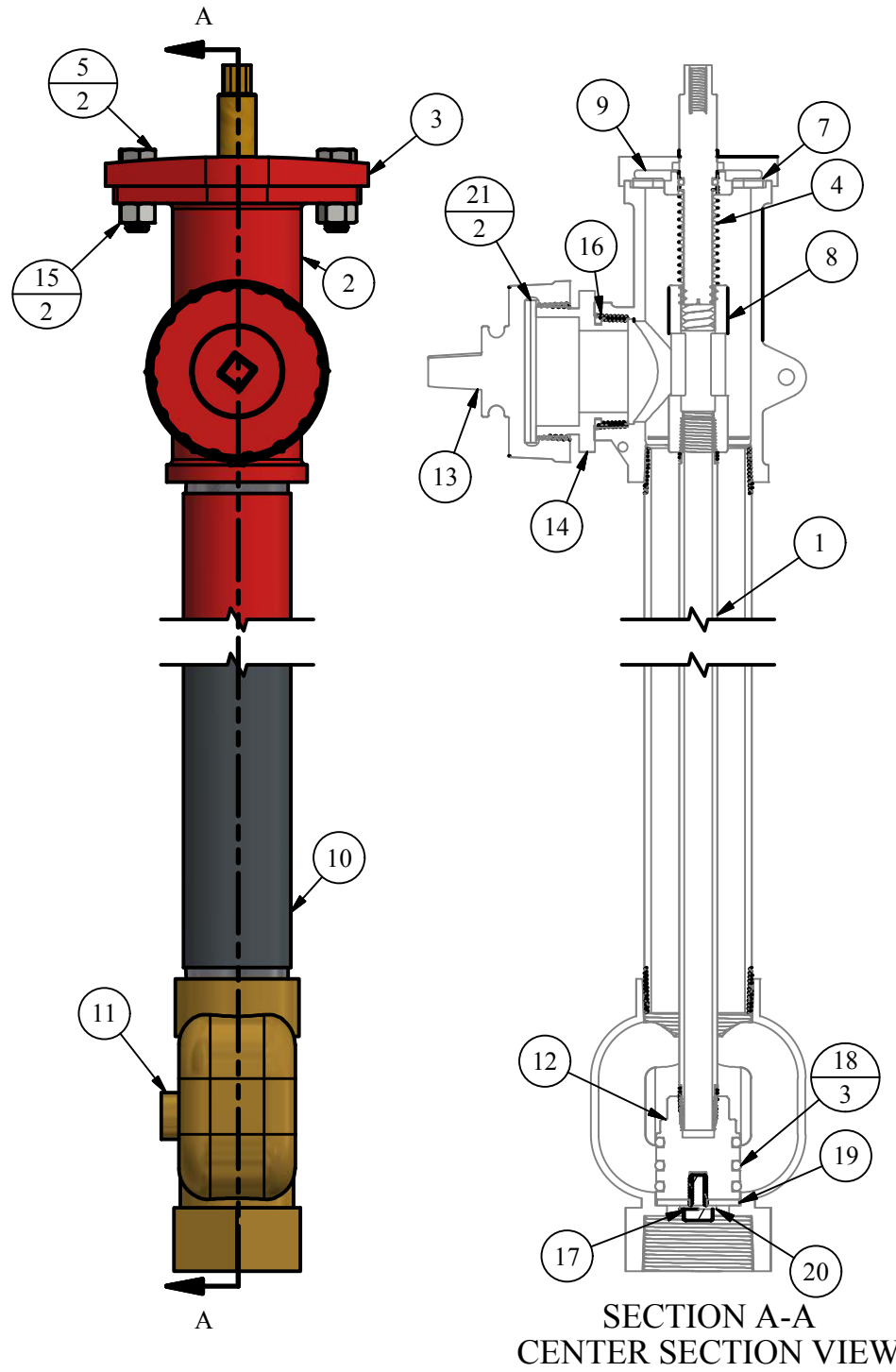
## #TF-200 WITH HANDLE



## TOP STOCK ASSEMBLY

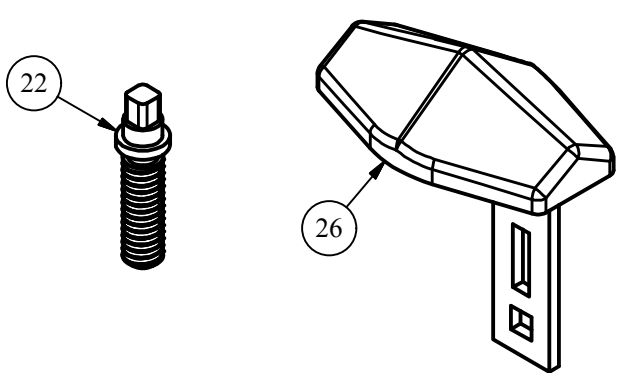


PARTS LIST				
ITEM	QTY	PART NUMBER	DESCRIPTION	NOTES
1	6.33	1/2P	1/2" STEEL PIPE	B,C
2	1	10201	IRON HEADSTOCK	C
3	1	10202	IRON TOP CAP	C
4	1	10204	BRASS TOP SCREW	
5	2	10210	TOP CAP BOLT	C
6	1	10220	O-RING FOR TOP SCREW	C
7	1	10222	TOP CAP GASKET	C
8	1	10241	BRASS CONNECTING NUT	C
9	1	10243	TRUFLO BRASS WASHER	C
10	5.83	2P	2" STEEL PIPE	B,C
11	1	57V	2" BRASS DUAL PORT STRAIGHT VALVE	C
12	1	57V-PLUNGER	PLUNGER	
13	1	592-C	2-1/2" NST SIDE CAP (SMALL SQUARE)	
14	1	601A	2-1/2" NST BRASS NOZZLE	
15	2	629A-N	FLANGE NUT	
16	1	669	PACKING NUT GASKET	C
17	1	77C	SEAT RUBBER BOLT	
18	3	77D	PLUNGER O-RING	C
19	1	77I	SEAT WASHER	C
20	1	77W	WASHER FOR PLUNGER	
21	2	A16	NOZZLE CAP GASKET (2-1/2")	C
OPTIONAL / REPAIR PARTS LIST				
22	0	10204-AV	ANTI-VANDAL TOP SCREW	
23	0	10250	GASKET FOR BREAKAWAY	C
24	0	10251	4-HOLE IRON FLANGE FOR BREAKAWAY	C
25	0	10252	8-HOLE IRON FLANGE FOR BREAKAWAY	C
26	0	10256	ANTI-VANDAL CAP	C
27	0	1699	IRON HANDLE	C
28	0	58V	2" BRASS DUAL PORT SIDE INLET VALVE	C
29	0	665	10" HAND WHEEL	C
30	0	ZTF500W-6	TRUFLO 6" OPERATING WRENCH	C

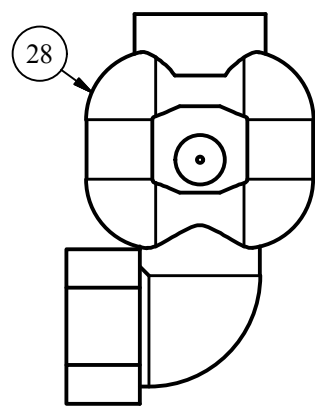


REPAIR KITS		
PART NUMBER	DESCRIPTION	PARTS INCLUDED
X10204	BRASS TOP SCREW COMPLETE	10204 SCREW (1), 10220 O-RING (1)
X57RK	TRUFLO REPAIR KIT	77D O-RING (3), 77I SEAT WASHER (1), 77W WASHER (1)
X57V-PLUNGER	TRUFLO PLUNGER COMPLETE	57V-PLUNGER PLUNGER (1), 77D O-RING (3), 77I SEAT WASHER (1), 77W WASHER (1) 77C BOLT (1)
X592C	NOZZLE CAP COMPLETE 2-1/2" NST	592-C SIDE CAP (1), A16 GASKET (2) 595 CHAIN ASSEMBLY (1)
X601A	BRASS NOZZLE 2-1/2" NST	601A NOZZLE (1), 669 GASKET (1)
OPTIONAL PART REPAIR KITS		
X500TF	BRASS TOP SCREW FOR HANDLE COMPLETE	500TF BRASS TOP SCREW (1), 10220 O-RING (1), 77C SCREW (1), 77W WASHER (1)

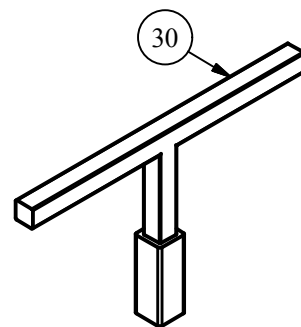
### OPTIONAL ANTI-VANDAL CAP & SCREW



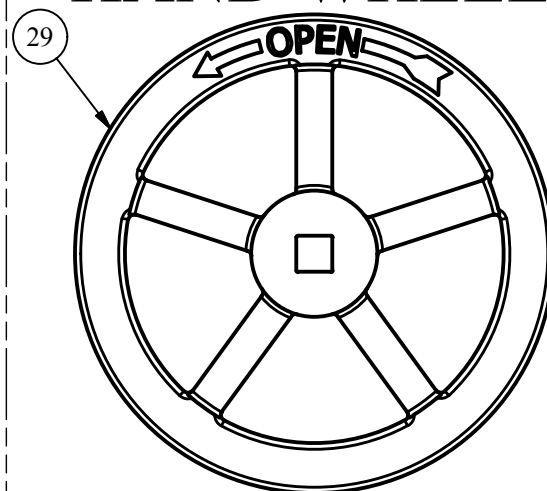
### OPTIONAL SIDE INLET VALVE



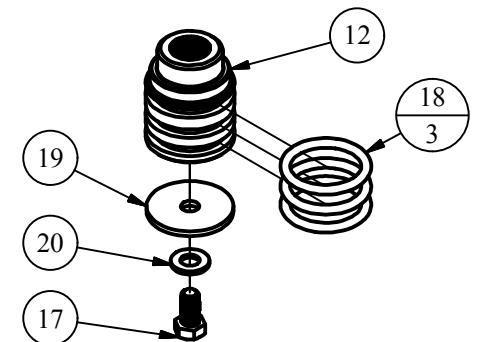
### 6" OPERATING WRENCH



### OPTIONAL HAND WHEEL



### PLUNGER ASSEMBLY



NOTE	DESCRIPTION
B	PIPE LENGTH DEPENDENT ON DEPTH OF BURY
C	SOLD AS REPLACEMENT PART

**DISCLAIMER**  
THIS DRAWING IS THE PROPERTY OF THE KUPFERLE FOUNDRY COMPANY. IT IS NOT TO BE USED OR DUPLICATED WITHOUT THE PERMISSION OF THE OWNER.

### LEGEND

- (X) → STANDARD TAG
- (X/Y) → TAG WITH Y QUANTITY

DRAWN	SMS	9/20/2017
CHECKED	DCL	2/20/2018
MODIFIED	MAM	1/30/2019
SIZE	C	
SCALE		1 / 4

DWG NO	#TF-200 Cut_Rev0
SHEET	1 OF 1
REV	1

